

Tropical Cyclone

Learn more at disasteraware.org/tutorials/



Respond Faster with Smart Alert™

Select Delivery



SMS: Receive tropical cyclone hazard alerts on your mobile device.

Email: This can be separate from your registration email.

PRO TIP

Enter a group email to alert your team, watch office, operations center, and more.

Hazard Severity & Data Source



Severities are based on intensity and proximity to land.

- **Warning:** Tropical storm conditions or stronger are expected to impact land within 36 hours (39 mph, 63 km/h, 34 kt or stronger winds). Take appropriate lifesaving action.
- **Watch:** Tropical storm conditions or stronger are expected to impact land within 48 hours (39 mph, 63 km/h, 34 kt or stronger winds). Finalize necessary preparations now.
- **Advisory:** Tropical storm conditions or stronger are expected to impact land within 5 days (39 mph, 63 km/h, 34 kt or stronger winds). Review your disaster plan and [supply checklist](#).
- **Information:** Tropical storm conditions or stronger are not expected, or there is **no current threat to land within the next 5 days** (63 km/h, 39 mph, 34 kt or stronger winds).

Sources: National Hurricane Center (NHC), Central Pacific Hurricane Center (CPHC), Joint Typhoon Warning Center (JTWC)

Focused Alerting

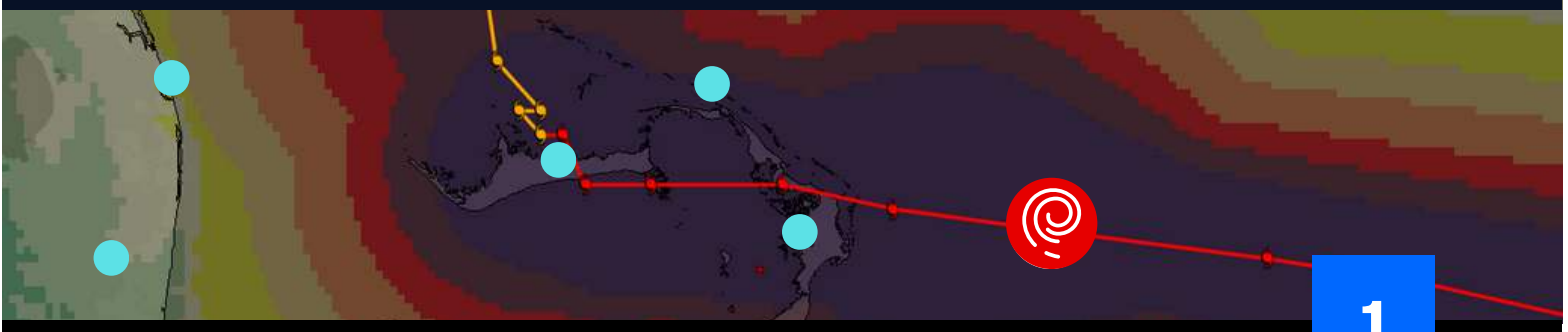


By default, your Smart Alert Area is set to **Global**.

Define Smart Alert Areas to ensure you receive alerts only for hazards that threaten the places you care about or areas you are interested in.

Enhance the monitoring and protection of specific assets (e.g. buildings, team and resource locations) via the **Assets feature**.

Enhanced Monitoring and Protection of Assets



Tropical Cyclone

Assess quickly using the Hazard tooltip ▶

TROPICAL CYCLONE ✕

Hurricane - Irma (Response Support)

Reported: 6 years ago
Updated: 5 years ago

Products Info Layers Event Brief



Products

Latest updates from PDC and partners.



Info

Quick summary of the tropical cyclone status.



Layers

Key layers related to tropical cyclones. (See next page for more.)



Event Brief

When widespread or greater wind damage is possible. (See example below.)

HURRICANE - OTIS MEXICO PDC | GLOBAL

EVENT STATUS AS OF 25 OCTOBER 2023 00:29 (UTC)

1 COUNTRY AFFECTED SET FILTER BY COUNTRY

HAZARD EXPOSURE RISK PROFILE ORGANIZATIONS & ACTIVITIES

POPULATION EXPOSED

ESTIMATED POPULATION EXPOSED: **4.85 MILLION**

ESTIMATED HOUSEHOLDS EXPOSED: **1.29 MILLION**

ESTIMATED VULNERABLE POPULATION EXPOSED: **2.13 MILLION**

25% 530,370 CHILDREN AGE 0-14

67% 1,427,100 ADULTS AGE 15-64

8% 172,530 ELDERLY AGE 65+

ESTIMATED HOSPITALS EXPOSED: **65**

ESTIMATED SCHOOLS EXPOSED: **241**

LIKELIHOOD OF IMPACT TO LIFELINES

POWER: SEVERE

COMMUNICATION: SEVERE

TRANSPORTATION: SEVERE

BREAKDOWN OF KEY NEEDS

FOR EXPOSED VULNERABLE POPULATION

4.47 BILLION CALORIES PER DAY

QUICKLY ANSWERS:

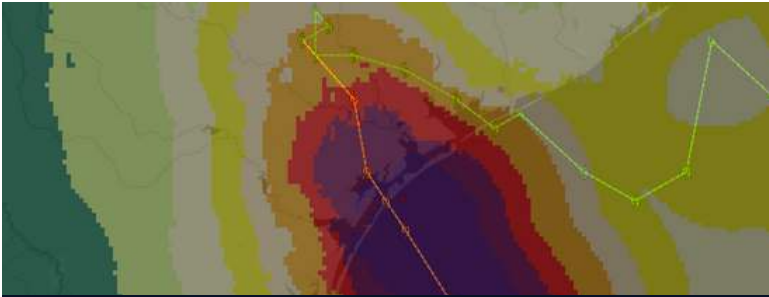
- What happened?
- Where was it?
- How bad was it?
- What actions do I need to take?

COORDINATES: LAT. ... REPORTED: TUE OCT 24 2023 21:29:33 GMT-0400 (EASTERN DAYLIGHT TIME) ... WIND SPEED: 144 MPH / 232 KPH ... 173 MPH / 278 KPH

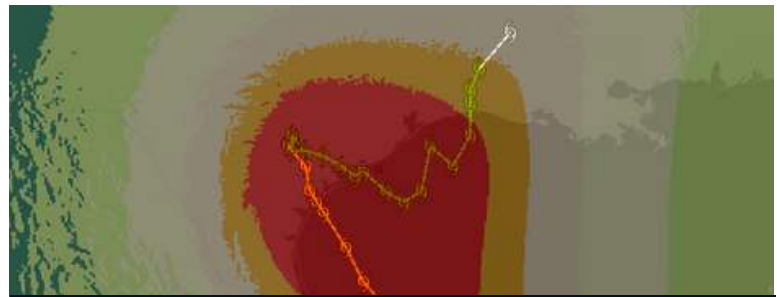


Access Key Layers

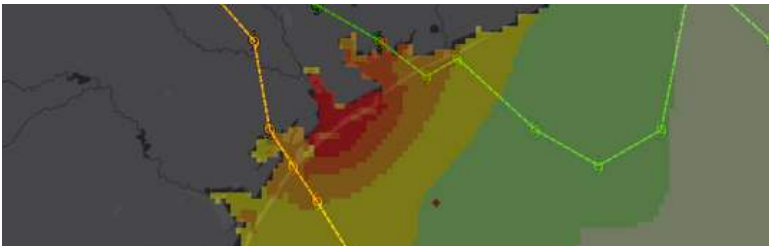
See [Layers](#) > Hazards and Events > Tropical Cyclone for all associated hazard layers.



Tropical Cyclone Winds (Hazard Tooltip)



Estimated Rainfall (Hazard Tooltip)



Still Water Storm Surge (Hazard Tooltip)



Storm Surge Zones (Layers > Regional Data)



EDIT

Import Data

Enhance your assessments by adding your own layers.

(Go to [Layers](#) > [Edit](#) > [Add Layer](#))



DRAWING

Create Data

Add points and features to the map (e.g. status, damage).

(Use the [Drawing](#) feature)



and

Shared Situational Awareness



BOOKMARKS

Save and share your bookmarked layers and drawings with the latest updates for shared situational awareness.

Select the  button next to the Bookmark you wish to share and then the **Share** option to copy its  link. (Account required to view.)

PRO TIP 

Be sure to check the **Regional Data** for additional, country-specific layers related to tropical cyclones (e.g. storm surge inundation zones).

“**Tropical Cyclone**” is the general term for the hazard and may be called by other names depending on where they form; e.g. **Hurricane** (Atlantic, Eastern and Central Pacific), **Typhoon** (Northwest Pacific), and **Tropical Cyclone** (South Pacific and Indian Ocean).