

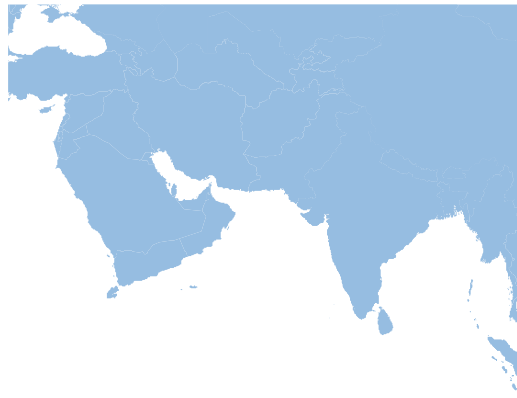
REGIONAL PARTNERSHIP

TO SUPPORT EFFICIENT HUMANITARIAN RESPONSE

JOINT ANALYSIS OF DISASTER EXPOSURE (JADE)

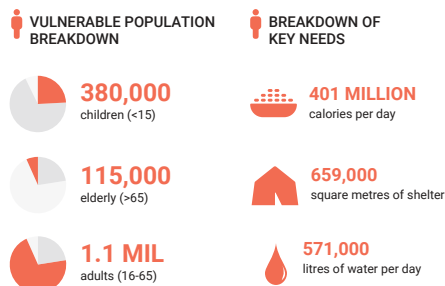


- Combining unique datasets
- Leveraging robust modeling capabilities
- Improving planning and humanitarian assistance



- CYCLONES
- FLOODS
- VOLCANOS
- EARTHQUAKES

20 NATIONS SUPPORTED



4 SUPPORTING FOUR MAJOR HAZARD TYPES AND MORE TO COME

JADE REPORT

JOINT ANALYSIS OF DISASTER EXPOSURE



PRODUCT OVERVIEW

Increased accuracy in estimation of exposure and needs for humanitarian assistance

UNOCHA, Pacific Disaster Center (PDC), and World Food Programme are breaking new ground together to codevelop analytical products designed to quickly inform humanitarian assistance providers with more detailed and accurate information about the potential impact of disasters. The new **Joint Analysis and Disaster Exposure (JADE) Report** couples WFP vulnerability data with PDC's unique datasets and modeling capabilities to more accurately estimate economic and population impacts, as well as humanitarian needs for the most vulnerable during disaster response.

SUPPORTS PLANNING, PREPARATION, EVACUATION, AND MORE

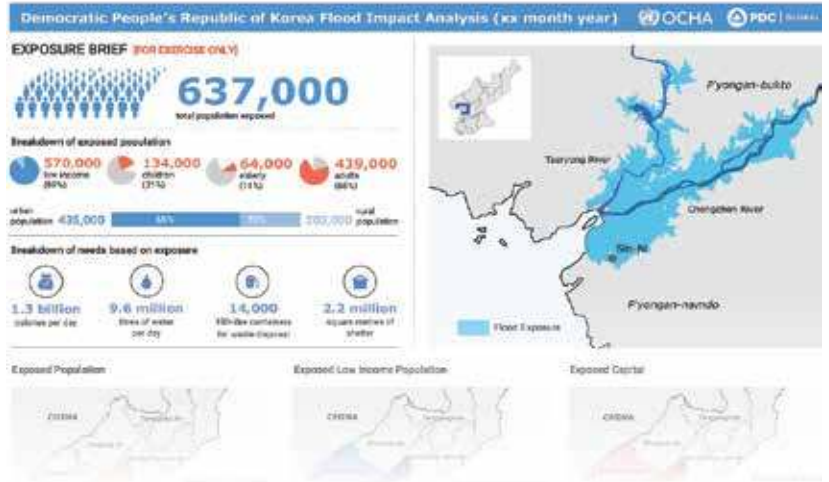
Provides insight to disaster managers and planners into which areas will be hardest hit, including the scale of population and economic exposure.

JUMP STARTS RESPONSE ACTIVITIES

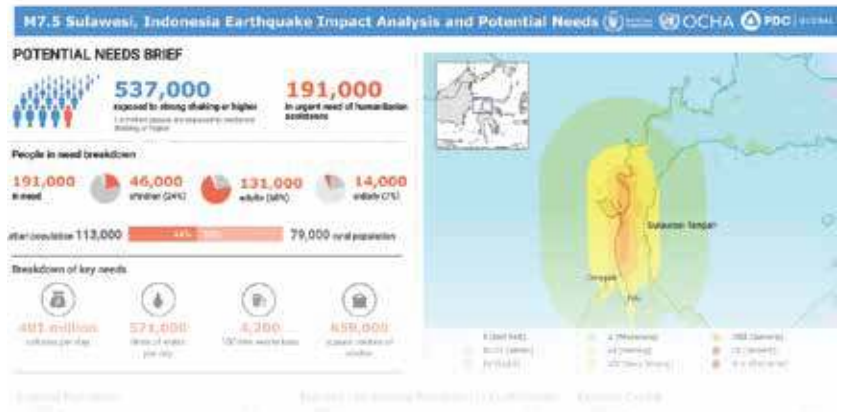
Helps responders gauge level of response in early stages and mobilize resources to deliver life-saving aid in a timely manner.

SAMPLE USE CASES

Democratic People's Republic of Korea: Flood Exercise



Sulawesi, Indonesia: Earthquake Response



COST TO REBUILD IN WORST AFFECTED AREAS BY SECTOR (US\$MILLIONS)

| | Residential | Service Sector | Industrial | Schools | Hospitals |
|-----------------|-------------|----------------|------------|---------|-----------|
| Sulawesi Barat | 8.21 | 10.7 | 7 | 6.3 | .01 |
| Sulawesi Tengah | 1,535 | 2,088 | 1,400 | 1,246 | 2.2 |

For additional questions, contact:

PDC U.S. Headquarters
1305 N. Holo pono Street
Suite 2, Kihei, HI 96753

P: +1 (808) 891-0525
F: +1 (808) 891-0526

response@pdc.org
www.pdc.org