

# Tropical Cyclone

Learn more at [disasteraware.org/help/](https://disasteraware.org/help/)



## Respond Faster with Smart Alert™

### Select Delivery



**SMS:** Available for U.S. phone numbers. If you do not see this option, [follow these steps](#) to setup Smart Alert notifications on your mobile device (in BETA).

**Email:** This can be separate from your registration email.

#### PRO TIP

Enter a group email to alert your team, watch office, operations center, and more.



### Hazard Severity & Data Source



**Severities are based on intensity and proximity to land.**

- **Warning:** Tropical storm conditions or stronger are expected to impact land within 36 hours (39 mph, 63 km/h, 34 kt or stronger winds). Take appropriate lifesaving action.
- **Watch:** Tropical storm conditions or stronger are expected to impact land within 48 hours (39 mph, 63 km/h, 34 kt or stronger winds). Finalize necessary preparations now.
- **Advisory:** Tropical storm conditions or stronger are expected to impact land within 5 days (39 mph, 63 km/h, 34 kt or stronger winds). Review your disaster plan and [supply checklist](#).
- **Information:** Tropical storm conditions or stronger are not expected, or there is **no current threat to land within the next 5 days** (63 km/h, 39 mph, 34 kt or stronger winds).

**Sources:** National Hurricane Center (NHC), Central Pacific Hurricane Center (CPHC), Joint Typhoon Warning Center (JTWC)

### Focused Alerting

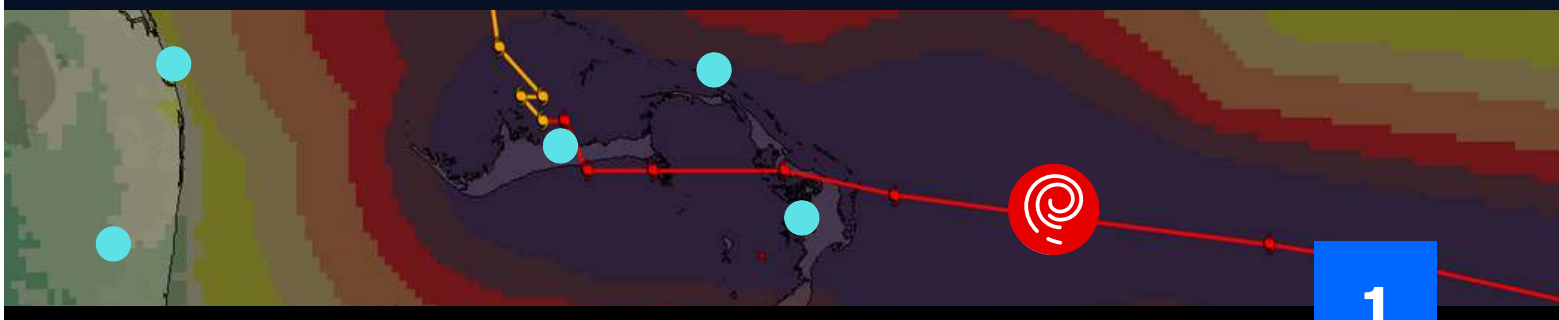


By default, your Smart Alert Area is set to **Global**. However, some users may see default Smart Alert settings set by their organization or sub-organization.

**Define Smart Alert Areas** to receive Smart Alerts only for the places you care about.

**Enhance the monitoring and protection of specific assets** (e.g. buildings, team and resource locations) via the **Assets** feature.

## Enhanced Monitoring and Protection of Assets



# Tropical Cyclone

Assess quickly using  
the Hazard tooltip ►



**TROPICAL CYCLONE**  
Hurricane - Irma (Response Support)  
Reported: 6 years ago  
Updated: 5 years ago

 Brief  Products  Edit  Event Brief



## Brief

Event summary, exposure,  
and key layers.



## Products

Latest updates from  
PDC and partners.



## Event Brief

When widespread or greater  
wind damage is possible.  
(See example below.)

## Quickly answers:

- **What** happened?
- **Where** was it?
- **How bad** was it?
- **What actions** do I need to take?



## HURRICANE - OTIS MEXICO

EVENT STATUS AS OF 25 OCTOBER 2023 00:29 (UTC)



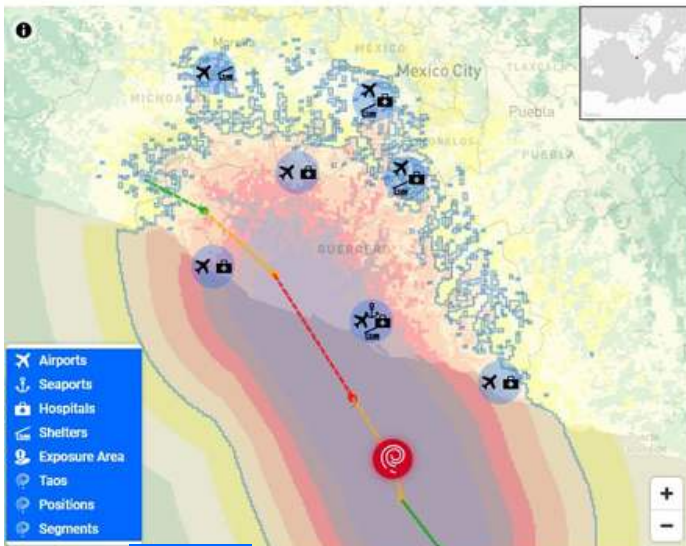
1 COUNTRY AFFECTED

SET FILTER BY COUNTRY ▼

HAZARD EXPOSURE

RISK PROFILE

ORGANIZATIONS &  
ACTIVITIES



COORDINATES: LAT.

REPORTED: TUE OCT 24 2023 21:29:33 GMT-0400 (EASTERN DAYLIGHT TIME)  
CURRENT SUSTAINED WIND SPEED: 144 MPH / 232 KPH  
PEAK SUSTAINED WIND SPEED: 173 MPH / 278 KPH

## POPULATION EXPOSED

ESTIMATED POPULATION  
EXPOSED

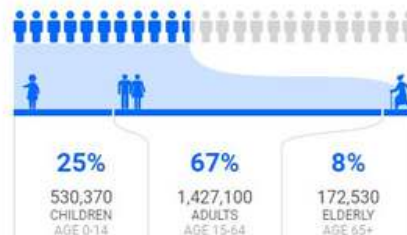
**4.85 MILLION**

ESTIMATED HOUSEHOLDS  
EXPOSED

**1.29 MILLION**

ESTIMATED VULNERABLE POPULATION EXPOSED

**2.13 MILLION**



ESTIMATED HOSPITALS  
EXPOSED

**65**

ESTIMATED SCHOOLS  
EXPOSED

**241**

## CAPITAL EXPOSED

## LIKELIHOOD OF IMPACT TO LIFELINES

POWER: **SEVERE**

COMMUNICATION: **SEVERE**

TRANSPORTATION: **SEVERE**

## BREAKDOWN OF KEY NEEDS

FOR EXPOSED VULNERABLE POPULATION

**4.47 BILLION**  
CALORIES PER DAY

**6.39 MILLION**  
LITERS OF WATER PER DAY

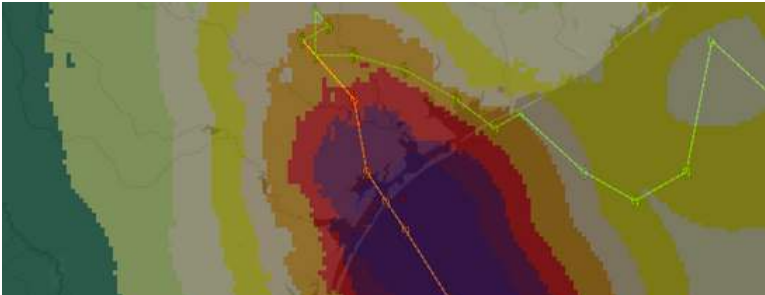
**213,000**  
100-LITER WASTE BINS

**7.34 MILLION**  
SQUARE METERS OF SHELTER

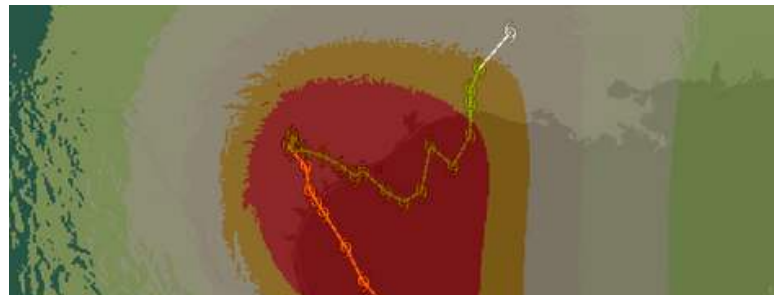


## Access Key Layers

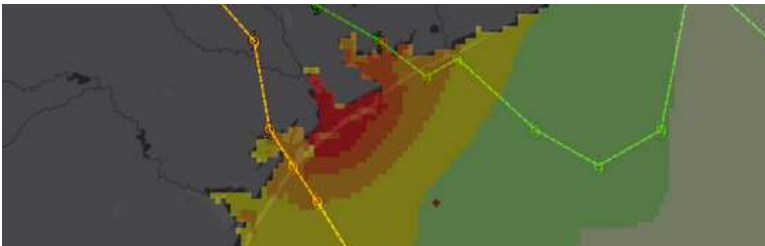
See **Layers** > Hazards and Events > Tropical Cyclone for all associated hazard layers.



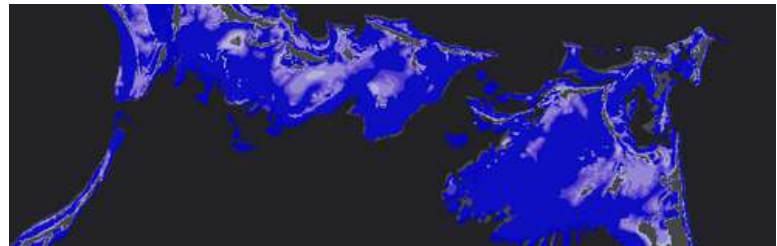
**Tropical Cyclone Winds** (Hazard Tooltip)



**Estimated Rainfall** (Hazard Tooltip)



**Still Water Storm Surge** (Hazard Tooltip)



**Storm Surge Zones** (Layers > Regional Data)



**EDIT**

### Import Data

Enhance your assessments by adding your own layers.

(Go to **Layers** > **Edit** > **Add Layer**)



**DRAWING**

### Create Data

Add points and features to the map (e.g. status, damage).

(Use the **Drawing** feature)


and

## Shared Situational Awareness



**BOOKMARKS**

**Save and share your bookmarked layers and drawings with the latest updates for shared situational awareness.**

Select the **i** button next to the Bookmark you wish to share and then the **Share** option to copy its  link. (Account required to view.)

**PRO  
TIP** 

Be sure to check the **Regional Data** for additional, country-specific layers related to tropical cyclones (e.g. storm surge inundation zones).

**“Tropical Cyclone” is the general term for the hazard** and may be called by other names depending on where they form; e.g. **Hurricane** (Atlantic, Eastern and Central Pacific), **Typhoon** (Northwest Pacific), and **Tropical Cyclone** (South Pacific and Indian Ocean).