

# Earthquake

Learn more at [disasteraware.org/help/](https://disasteraware.org/help/)



## Respond Faster with Smart Alert™

### Select Delivery



SMS: Available for U.S. phone numbers. If you do not see this option, [follow these steps](#) to setup Smart Alert notifications on your mobile device (in BETA).

**Email:** This can be separate from your registration email.

#### PRO TIP

Enter a group email to alert your team, watch office, operations center, and more.



### Hazard Severity & Data Source



**Initial severities** are based on magnitude and are updated as additional information on impacts becomes available.



**Warning:** A strong earthquake has occurred with anticipated impacts. Take protective lifesaving action.



**Watch:** A moderately strong earthquake has occurred and may result in localized damage. Be aware of your surroundings and proceed with caution.



**Advisory:** An earthquake has occurred. Major damage is not anticipated.

**Source:** United States Geological Survey (USGS)

### Focused Alerting

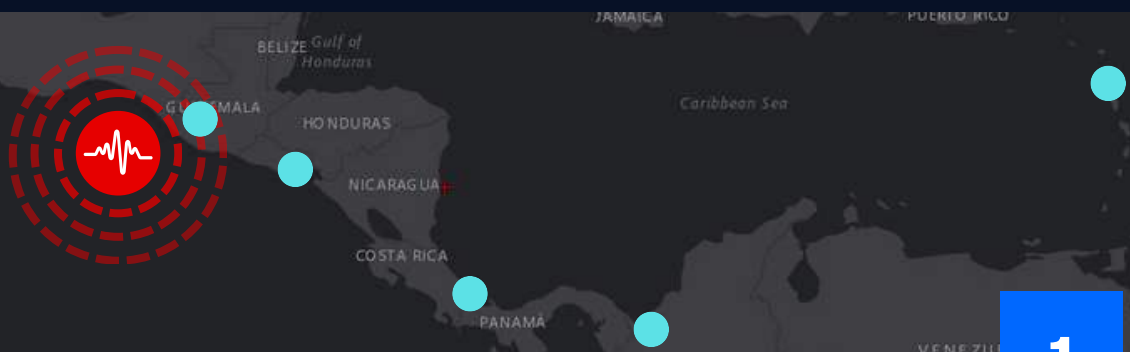


By default, your Smart Alert Area is set to **Global**. However, some users may see default Smart Alert settings set by their organization or sub-organization.

**Define Smart Alert Areas** to receive Smart Alerts only for the places you care about.

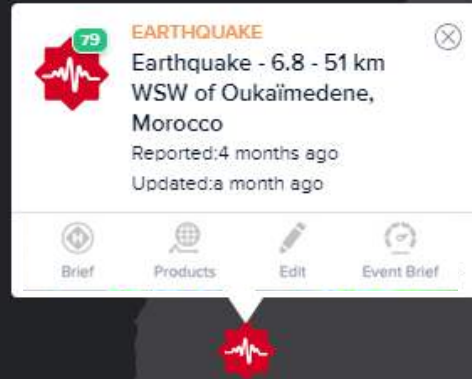
**Enhance the monitoring and protection of specific assets** (e.g. buildings, team and resource locations) via the **Assets** feature.

## Enhanced Monitoring and Protection of Assets



# Earthquake

Assess quickly using  
the Hazard tooltip ►



## Brief

Event summary, exposure,  
and key layers.



## Products

Latest updates from  
PDC and partners.

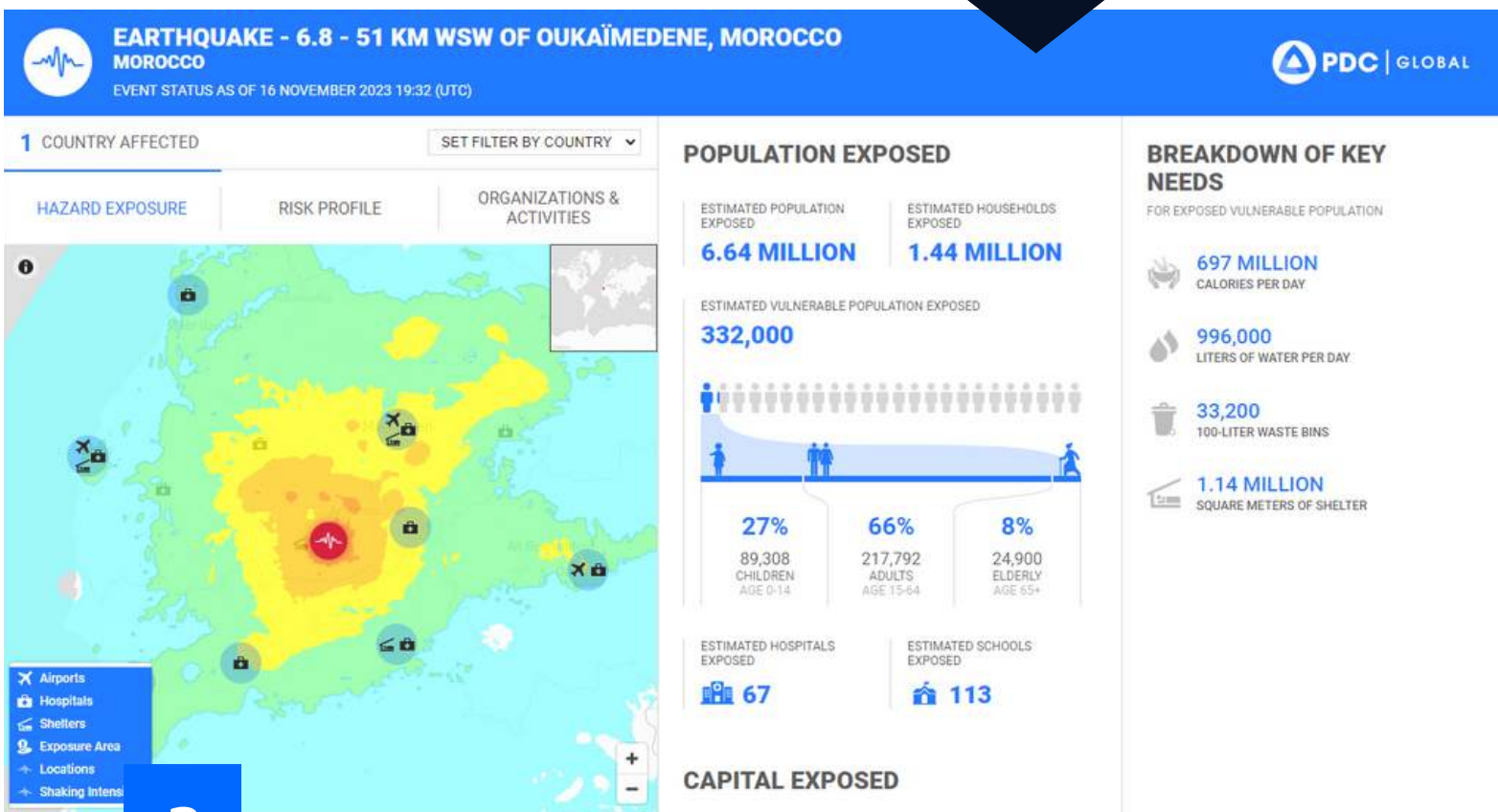


## Event Brief

Earthquakes with Strong  
Shaking (MMI VII) or higher.  
(See example below.)

## Quickly answers:

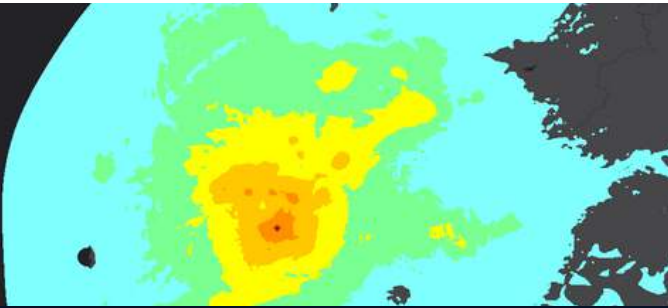
- **What** happened?
- **Where** was it?
- **How bad** was it?
- **What actions** do I need to take?





## Access Key Layers

See Layers > Hazards and Events > Earthquake for all associated hazard layers.



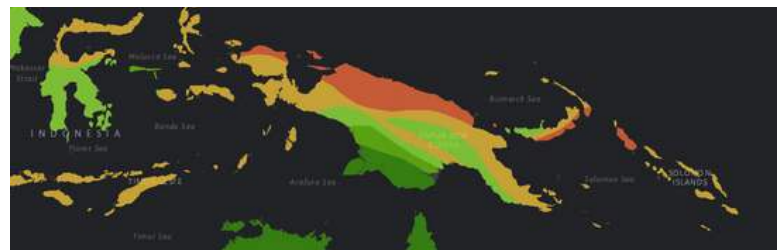
Shaking Intensity (Hazard Tooltip)

Locations and Magnitude  
 DEPTH KM: 10  
 DATE (USER TZ): 2024 Jan 03, 09:47:59  
 MAGNITUDE: 4.7  
 REGION: 11 km NNW of Anemizu, Japan

Locations and Magnitude (Hazard Tooltip)



Historical Earthquakes (Hazards and Events)



Earthquake Intensity Zones (Hazards and Events)



EDIT

## Import Data

Enhance your assessments by adding your own layers.

(Go to Layers > Edit > Add Layer)



DRAWING

## Create Data

Add points and features to the map (e.g. status, damage).

(Use the Drawing feature)

and

## Shared Situational Awareness



BOOKMARKS

Save and share your bookmarked layers and drawings with the latest updates for shared situational awareness.

Select the **i** button next to the Bookmark you wish to share and then the **Share** option to copy its link (Account required to view.)

**PRO TIP**

Receiving updates from teams on the ground? (e.g. damage, utility status, team status, completed and planned assessment areas, etc.) Use the Drawing tools to quickly add that information to the map. Then Bookmark and share it with others.

Bookmarked drawings can easily be updated and saved to ensure the latest status is reflected.