



Operations Quick Start Guide

2025 • DisasterAWARE Pro® • Version 9

Page

1

Initial Setup

3

Monitor

4

Assess

6

Respond

7

Advanced Features

**ACOUNT
SUPPORT**

Contact:
disaster@pdc.org

**ADDITIONAL
RESOURCES**

See **?** **HELP**
in DisasterAWARE

(e.g. full user guide, online training, etc.)



Minimum System Requirements

Supported Browsers



Google Chrome
version 51+



Firefox
version 47+



Safari
version 9+

Connection Speed



Broadband internet with **4Mbps** download speed

(or) **4G mobile** internet connection

Monitor Display Resolution



1024 x 768
(Optimal Resolution)

1920 x 1200
(Best Experience)

Additional Settings

- **Turn on cookies:** Used for session management. Typically on by default.
- **Allow PDC Pop-ups:** Many features and functions are delivered this way.
- **Add “disasteraware.org” and “pdc.org”** to your browser’s list of **trusted websites**.
- **Check your browser’s Zoom setting:** Set to 100%



Access DisasterAWARE Pro

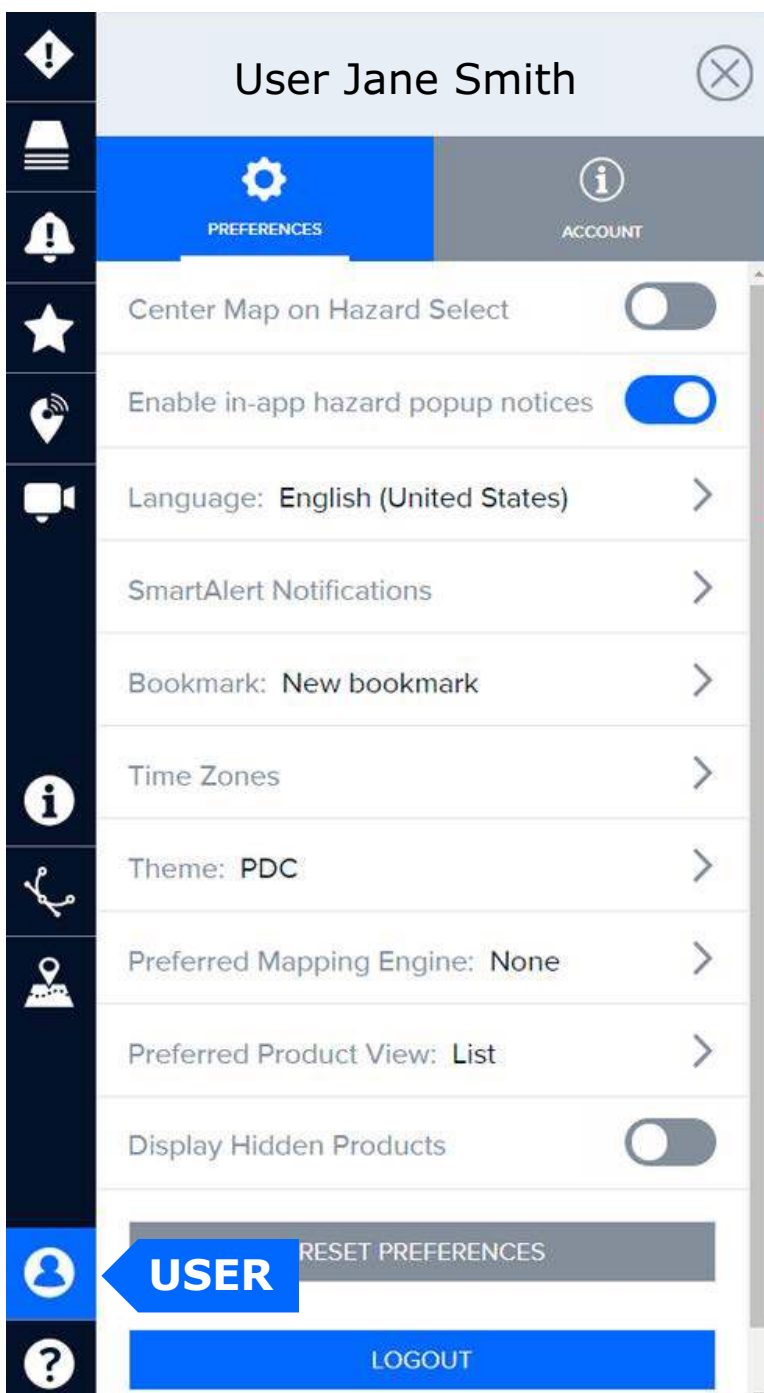
Log In here ► <https://disasteraware.pdc.org>

Need an account? Select [Request Access](#)

INITIAL SETUP



Customize Your User Preferences



Go to **User** ▶ **Preferences** to change your DisasterAWARE settings at anytime.

Key Preferences to consider customizing

- In-app hazard notices
- Language
- Time Zones
- Bookmark (default Map View)

Setup your default Map View



Navigate your **Map** to the area you wish to see each time you log in.



Open the **Layers** panel and display any data you wish to see by default.



Then go to the **Bookmarks** panel to create a Bookmark.



In the **Bookmarks** panel, select the options button at the top-right.



Then select **Add Bookmark** and follow the promptings to create.



Return to your **User Preferences** and select that Bookmark as default.

Change Password



Go to **User** ▶ **Account** and select that option to change your password.



Respond Faster with Smart Alert™

DisasterAWARE is your ready-made 'Early Warning for All' System

Select Delivery



SMS: Available for U.S. phone numbers. If you do not see this option, [follow these steps](#) to setup Smart Alert notifications on your mobile device (in BETA).

Email: This can be separate from your registration email.

PRO TIP





Enter a group email to alert your team, watch office, operations center, and more.



Hazard Severity



General severity descriptions (see User Guide for more):

-  **Warning:** Adverse or significant impacts to population are imminent or occurring. Act Now.
-  **Watch:** Conditions are possible for adverse or significant impacts to population. Monitor closely and be prepared to act.
-  **Advisory:** Conditions are possible for limited or minor impacts to population. Exercise caution.
-  **Information:** Conditions are possible for limited or minor impacts to population. Stay informed.

Focused Alerting

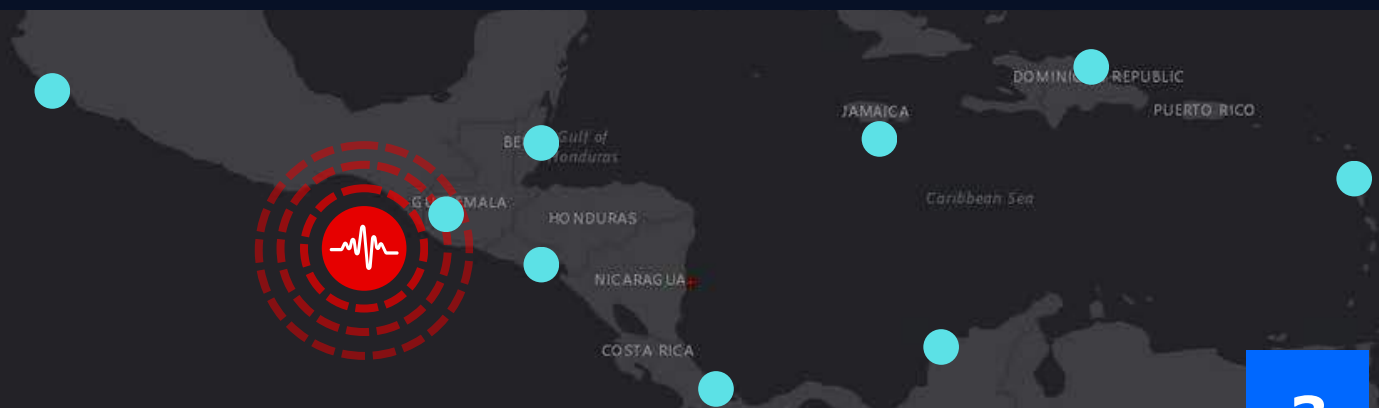


By default, your Smart Alert Area is set to **Global**. However, some users may see default Smart Alert settings set by their organization or sub-organization.

Define Smart Alert Areas to receive Smart Alerts only for the places you care about

Enhance the monitoring and protection of specific assets (e.g. buildings, team and resource locations) via the **Assets feature**.

Enhanced Monitoring and Protection of Assets



ASSESS

Assess quickly using the Hazard tooltip ▶

TROPICAL CYCLONE
Hurricane - Irma (Response Support)
Reported: 6 years ago
Updated: 5 years ago

Products Info Layers Event Brief



Products

Latest updates from PDC and partners.



Info

Quick summary of the hazard event.



Layers

Key layers related to that hazard type.



Event Brief

As available. See User Guide for Event Brief thresholds.

EARTHQUAKE - 7.7 - 16 KM NNW OF SAGAING, MYANMAR
MYANMAR, CHINA AND 1 MORE
EVENT STATUS AS OF 02 APRIL 2025 01:51 (UTC)

3 COUNTRIES AFFECTED

HAZARD EXPOSURE RISK PROFILE ORGANIZATIONS & ACTIVITIES

POPULATION EXPOSED

ESTIMATED POPULATION EXPOSED: **38.7 MILLION**
ESTIMATED HOUSEHOLDS EXPOSED: **8.57 MILLION**
ESTIMATED VULNERABLE POPULATION EXPOSED: **9.40 MILLION**

LIKELIHOOD OF IMPACT TO LIFELINES

POWER: SEVERE
COMMUNICATION: SEVERE
TRANSPORTATION: SEVERE

BREAKDOWN OF KEY NEEDS

FOR EXPOSED VULNERABLE POPULATION

19.7 BILLION CALORIES PER DAY

28.2 MILLION

24% 2,300,451 CHILDREN AGE 0-14
68% 6,437,316 ADULTS AGE 15-64
7% 672,235 ELDERLY AGE 65+

ESTIMATED HOSPITALS EXPOSED: **435**
ESTIMATED SCHOOLS EXPOSED: **1,241**

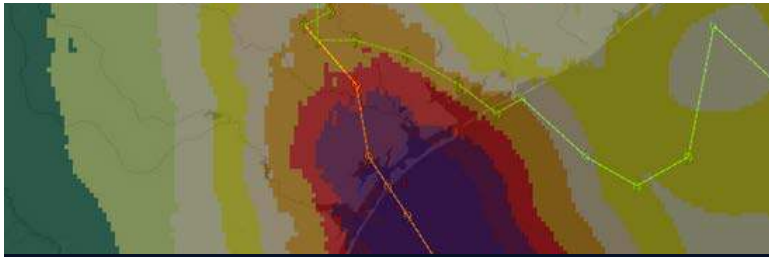
CAPITAL EXPOSED

USD **167 BILLION**

Quickly answers:
• What happened?
• Where was it?
• How bad was it?
• What actions do I need to take?



Access Key Layers



Hazard Data



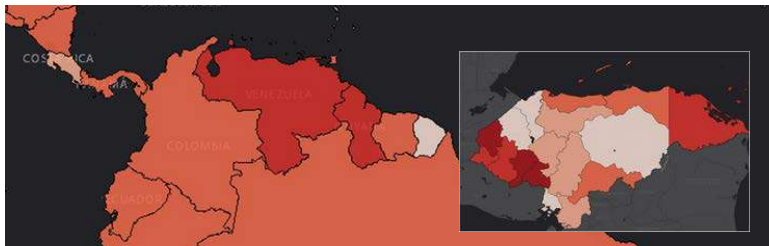
Observations and Forecasts



Population and Critical Infrastructure



Background Maps



Risk and Vulnerability Assessments



Access the **Legend** for information on symbols, colors, and icons displayed.
(See top-right corner)



Risk Intelligence & Advanced Analytics

Enhance your assessments with PDC's integrated **Risk and Vulnerability Assessment** layers.

35+

Countries assessments completed or underway at the national and sub-national levels through PDC's NDPBA program (www.pdc.org/NDPBA).
See Layers ▶ Regional Data ▶ Region ▶ Country ▶ Risk and Vulnerability

195

Countries assessed annually through PDC's Global RVA project.
See Layers ▶ Main ▶ Advanced Analytics ▶ Risk and Vulnerability




Shared Situational Awareness



Bookmarks

Bookmark and share combinations of layers and drawings for quick access and shared situational awareness across your team and partners.

Select **i** next to the Bookmark you wish to share and then the **SHARE** option to copy its **link** . (Account required to log in and view.)



Drawings

Receiving updates from teams on the ground?

Quickly add that information as **drawings** and **text** to your map. Then **bookmark** and **share the link** with others.



Edit

Import Data

Enhance your assessments by adding your own layers.

(Go to Layers ▶ Edit ▶ Add Layer)



Print

Create Maps

Share products featuring your current map view.

(Located in the top-right corner)



Products

Products

Keep an eye out for the latest products from the response community.

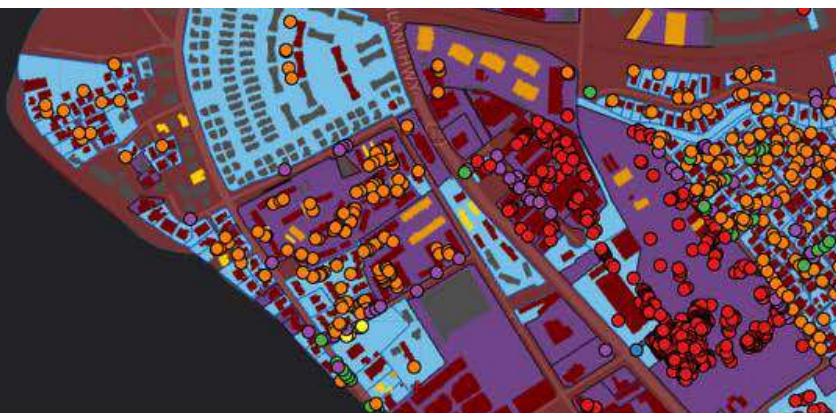


Layers

Response Data

Access data for major response events.

(Layers ▶ Disaster Response Events)



PRO TIP

When not responding, conduct **training and exercises** using past **Disaster Response Event** layers in DisasterAWARE.



Leverage Advanced Features



Live Ground Conditions

Available for select locations.

Select a camera from the list or the map.

Enable up to 10 **Active Cameras** for maximum monitoring.



Media Reports

Filter by **keyword** in the options.

Leverage the **Scan** tool to filter further on the map.

**Better solutions.
Fewer disasters.**

Safer world.

**1305 N Holopono Street
Suite 2, Kihei, HI 96753**

**P: (808) 891-0525
F: (808) 891-0526**

**www.pdc.org
info@pdc.org**

 **@PDC_Global**

 **/PDCGlobal**

 **/pacificdisastercenter**