



ARGENTINA

JUJUY

NDPBA PROVINCE PROFILE

ARGENTINA

JUJUY

CAPITAL: JUJUY

Area: 53,196 km²

Jujuy Province is located in the Noroeste Argentino (NOA) region of Argentina. This Province is divided into 16 Provinces, the Capital being Jujuy. The Province borders Bolivia, Chile and the Province of Salta. The main economic sources are agriculture and mining.



RISK AND VULNERABILITY COMPONENT SCORE



MULTI-HAZARD RISK (MHR) - Moderate

Score: 0.537 • Rank: 12/24



RESILIENCE (R) - Low

Score: 0.433 • Rank: 17/24



MULTI-HAZARD EXPOSURE (MHE) - Moderate

Score: 0.478 • Rank: 13/24



VULNERABILITY (V) - Low

Score: 0.485 • Rank: 16/24



COPING CAPACITY (CC) - Very Low

Score: 0.350 • Rank: 22/24



Population (2018)

753,891



Population in Poverty

31.7%



Illiterate population

3.1%



Access to improved water

94.5%



Average life expectancy

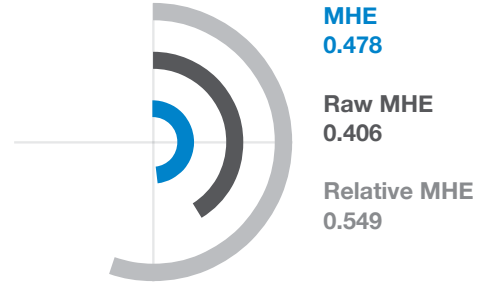
74.8 years

*For more information on data and components please visit: <https://bit.ly/2LqVoUO>

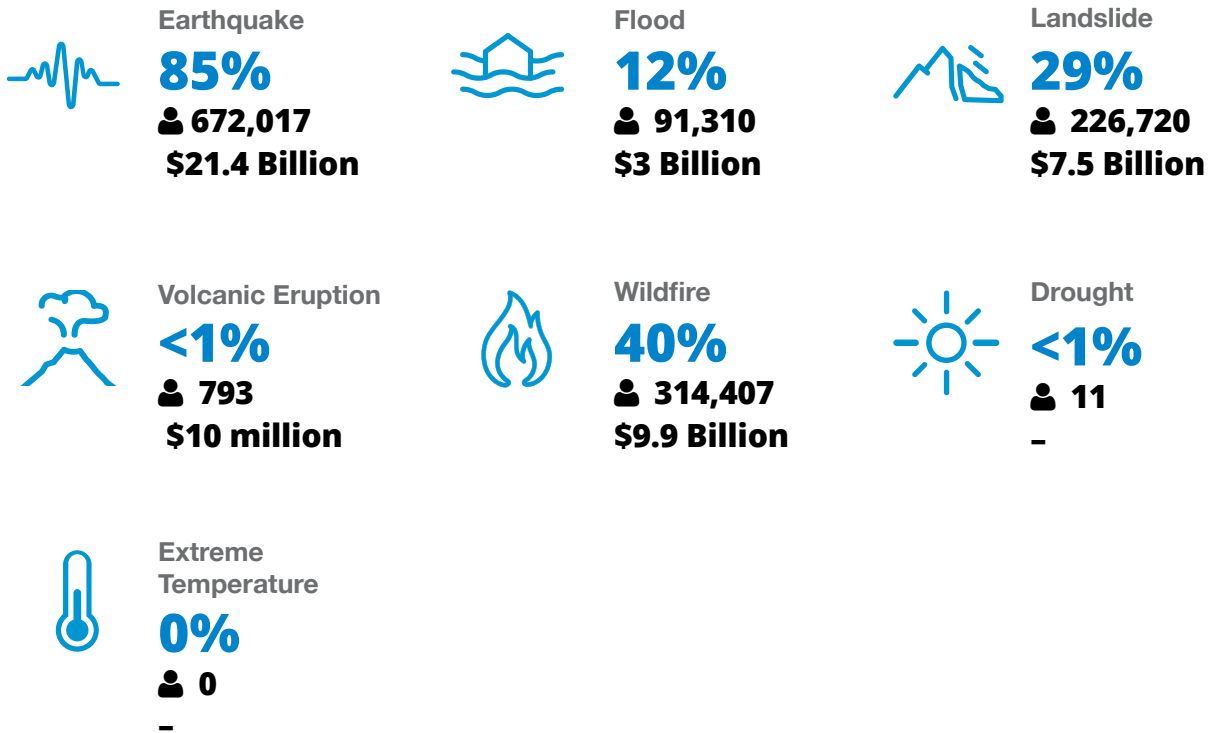


MULTI-HAZARD EXPOSURE (MHE)

RANK: 13 / 24 PROVINCES
SCORE: 0.478



ESTIMATED POPULATION AND CAPITAL EXPOSED TO EACH HAZARD:





VULNERABILITY (V)

RANK: 16 / 24 PROVINCES ASSESSED
SCORE: 0.485

Vulnerability in Jujuy is primarily driven by Gender Inequality and Vulnerable Health Status. The bar chart indicates the socioeconomic themes contributing to the province's overall Vulnerability score.



Environmental Stress

SCORE: 0.41 **RANK: 19/24 PROVINCES ASSESSED**

2.4% **39.6**
Land degradation Land affected by wildfire (per 100k ha)



Vulnerable Health Status

SCORE: 0.61 **RANK: 3/24 PROVINCES ASSESSED**

74.8 **11.6** **3.2** **16.3%** **18.9** **54.1**
Life expectancy (years) Infant mortality rate (per 1,000 live births) Maternal mortality ratio Disability HIV incidence Tuberculosis incidence



Clean Water Vulnerability

SCORE: 0.327 **RANK: 19/24 PROVINCES ASSESSED**

5.5% **39.2%**
Households without piped water Households without sewage services



Information Access Vulnerability

SCORE: 0.427 **RANK: 18/24 PROVINCES ASSESSED**

3.1% **84.6%** **91.3%** **2.97**
Illiteracy Rate (Age 10+) Secondary education completion rate School enrollment Education investment per capita (million pesos)



Economic Constraints

SCORE: 0.454 **RANK: 18/24 PROVINCES ASSESSED**

54 **5.6%** **31.7%**
Economic dependency ratio Unemployment rate Poverty rate



Gender Inequality

SCORE: 0.638 **RANK: 10/24 PROVINCES ASSESSED**

1.88 **40**
Female to male unemployment Female judiciary seats



Population Pressures

SCORE: 0.528 **RANK: 11/24 PROVINCES ASSESSED**

1.2%
Average Annual population change



COPING CAPACITY (CC)

RANK: 22 / 24 PROVINCES ASSESSED
SCORE: 0.350

Jujuy exhibits weaker Coping Capacity in the areas of Transportation Capacity and Communications Capacity. The bar chart indicates the socioeconomic themes contributing to the province's overall Coping Capacity score.



Economic Capacity

SCORE: 0.375 **RANK: 20/24 PROVINCES ASSESSED**

760.3 Exports per capita (USD)	0.7% Work insurance coverage	27.2 Tax distribution
--	--	---------------------------------



Governance

SCORE: 0.5 **RANK: 14/24 PROVINCES ASSESSED**

21.1 Crime prevalence	81.8% Voter participation
---------------------------------	-------------------------------------



Environmental Capacity

SCORE: 0,665 **RANK: 2/24 PROVINCES ASSESSED**

38.2% Protected area	21.5% Forest cover
--------------------------------	------------------------------



Infrastructure Capacity

SCORE: 0.254 **RANK: 24/24 PROVINCES ASSESSED**



Health Care Capacity

SCORE: 0.416 **RANK: 16/24 PROVINCES ASSESSED**

36.5 Hospital beds per 10,000 people	24.4 Physicians per 10,000 people	54.8% Health insurance coverage	18.9 Average distance to nearest hospital (km ²)
--	---	---	--



Transportation Capacity

SCORE: 0.1 **RANK: 24/24 PROVINCES ASSESSED**

0.16 Road density (km per sq. km)	52.6 Average distance to port (km)	63.1% Proportion of roads improved
---	--	--



Communications Capacity

SCORE: 0.131 **RANK: 21/24 PROVINCES ASSESSED**

23.7% Households with Internet	11.6% Television subscriptions per 100 people
--	---



Energy Capacity

SCORE: 0.37 **RANK: 18/24 PROVINCES ASSESSED**

93.9% Households with electricity	37.6% Households with gas
---	-------------------------------------



Disaster Management Capabilities

SCORE: 0.131 **RANK: 23/24 PROVINCES ASSESSED**

66.8 Distance to fire station (km)	0 Shelters per 100k persons	37.9% Radiobase access
--	---------------------------------------	----------------------------------



RESILIENCE (R)

RANK: 17 / 24 PROVINCES
SCORE: 0.433

Jujuy's score and ranking are due to Low Vulnerability combined with Very Low Coping Capacity scores.

Below are the four thematic areas with the weakest relative scores:



Gender Inequality



Vulnerable Health Status



Transportation Capacity



Communications Capacity



HAZARD-SPECIFIC RISK (HSR)



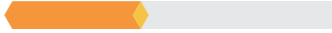
Earthquake



RANK: 4 / 24 PROVINCES ASSESSED
SCORE: 0.501



Wildfire



RANK: 5 / 24 PROVINCES ASSESSED
SCORE: 0.373



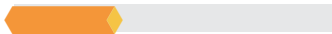
Volcano



RANK: 5 / 24 PROVINCES ASSESSED
SCORE: 0.085



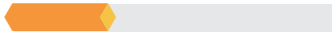
Flood



RANK: 8 / 24 PROVINCES ASSESSED
SCORE: 0.297



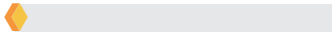
Landslide



RANK: 5 / 24 PROVINCES ASSESSED
SCORE: 0.278



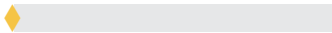
Drought



RANK: 21 / 24 PROVINCES ASSESSED
SCORE: 0.021



Extreme Temperature



RANK: 14 / 24 PROVINCES ASSESSED
SCORE: 0



MULTI-HAZARD RISK (MHR)

12 / 24

RANK WITHIN PROVINCES
Score: 0.537

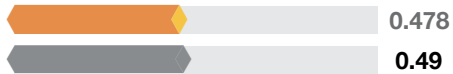


Jujuy's score and ranking are due to Moderate Multi-hazard exposure combined with Low Vulnerability and Very Low Coping Capacity scores.

Multi-hazard risk component scores compared to overall average country scores:



Multi-Hazard Exposure



DISTRICT SCORE
COUNTRY SCORE



Vulnerability



Coping Capacity



JUJUY RECOMMENDATIONS

1

Gender Inequality

Focus efforts to support equal labor participation by diversifying economic opportunities for women in the Province.

Promote social benefit programs that support single parents with children.

Encourage women to participate in the disaster management planning and decision-making process through inclusion community emergency brigades and representation in local government.

2

Vulnerable Health Status

Findings show that Jujuy Province has the 3rd highest overall Vulnerable Health Status in Argentina. The Province is among Argentina's highest in infectious disease incidence, combined with the 2nd highest rate of disability in the country.

Make provisions for the special needs of disabled persons during disasters, including evacuation, shelter, and medical care.

Continue active health surveillance to prevent the spread of disease and increase availability of skilled health care.

JUJUY RECOMMENDATIONS

3

Transportation Capacity

Findings show that Jujuy Province ranks lowest in Argentina in Transportation Capacity. Just 63% of roads are paved and the Province exhibits the greatest average distance to the nearest airport.

Invest in transportation infrastructure to facilitate the distribution of resources and services before, during, and after a disaster.

4

Communications Capacity

Jujuy ranks 21st in overall Communication Capacity. Just 24% of households have access to the internet – lowest in the country. There are just 12 television subscriptions per 100 people. Pursue public-private partnerships to increase availability and affordability of internet and television communications.

While investing to diversify access to communication technology, officials should broadcast critical information and disaster warnings primarily via alternate media (such as radio) to keep the population informed and ensure that appropriate actions are taken. Jujuy Province is exposed earthquake, wildfire, landslide and flood hazards.

**Better solutions.
Fewer disasters.**

Safer world.

**1305 N Holopono Street
Suite 2, Kihei, HI 96753**

**P: (808) 891-0525
F: (808) 891-0526**



@PDC_Global



/PDCGlobal



www.pdc.prg



ndpba.arg@pdc.org