



ARGENTINA

CÓRDOBA

NDPBA PROVINCE PROFILE

ARGENTINA CÓRDOBA

CAPITAL: CÓRDOBA

Area: 164,663 km²

Córdoba Province is located in the Central region of Argentina. This Province is divided into 26 Provinces, the Capital being Córdoba. The Province borders the Provinces of Buenos Aires, Santa Fe, Santiago del Estero, Catamarca, La Rioja, San Luis and La Pampa. The main economic sources are tourism, agriculture, livestock, industry and services such as financial, educational, medical, etc.



RISK AND VULNERABILITY COMPONENT SCORE



MULTI-HAZARD RISK (MHR) - High

Score: 0.584 • Rank: 7/24



RESILIENCE (R) - High

Score: 0.509 • Rank: 7/24



MULTI-HAZARD EXPOSURE (MHE) - Very High

Score: 0.771 • Rank: 3/24



VULNERABILITY (V) - Moderate

Score: 0.545 • Rank: 11/24



COPING CAPACITY (CC) - Very High

Score: 0.564 • Rank: 1/24



Population (2018)

3,683,937



Population in Poverty

36.5%



Illiterate population

1.5%



Access to improved water

91.9%



Average life expectancy

75.8 years

*For more information on data and components please visit: <https://bit.ly/2LqVoUO>



MULTI-HAZARD EXPOSURE (MHE)

RANK: 3 / 24 PROVINCES
SCORE: 0.771

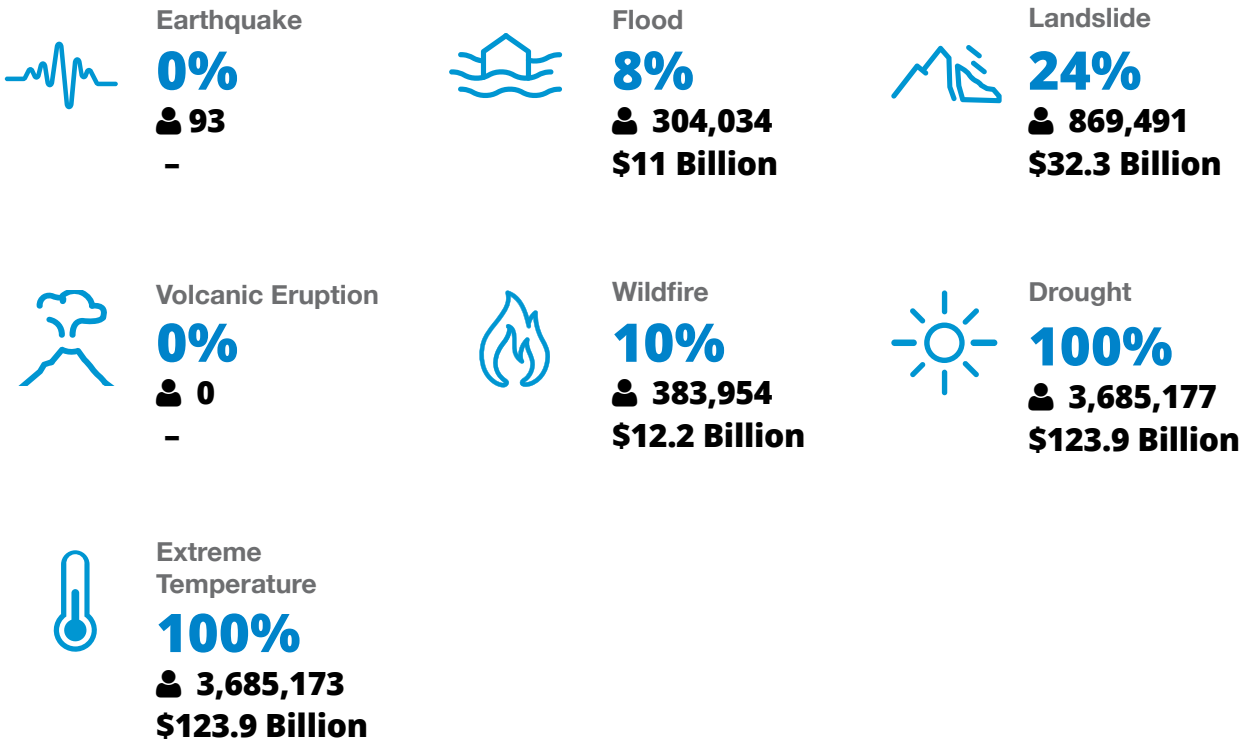


MHE
0.771

Raw MHE
0.717

Relative MHE
0.826

ESTIMATED POPULATION AND CAPITAL EXPOSED TO EACH HAZARD:





VULNERABILITY (V)

RANK: 11 / 24 PROVINCES ASSESSED
SCORE: 0.545

Vulnerability in Córdoba is primarily driven by Gender Inequality and Environmental Stress. The bar chart indicates the socioeconomic themes contributing to the province's overall Vulnerability score.



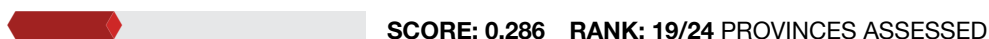
Environmental Stress



6.2% **274.3**
Land degradation Land affected by wildfire (per 100k ha)



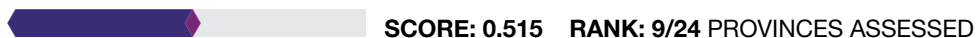
Vulnerable Health Status



75.8 **8.9** **2.8** **12.4%** **11.6** **8.9**
Life expectancy (years) Infant mortality rate (per 1,000 live births) Maternal mortality ratio Disability HIV incidence Tuberculosis incidence



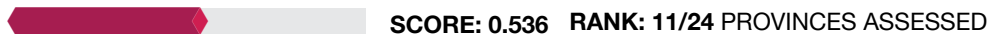
Clean Water Vulnerability



8.1% **61.7%**
Households without piped water Households without sewage services



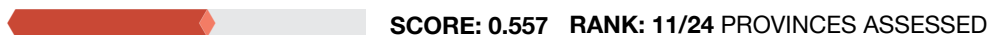
Information Access Vulnerability



1.5% **80.1%** **87.6%** **2.15**
Illiteracy Rate (Age 10+) Secondary education completion rate School enrollment Education investment per capita (million pesos)



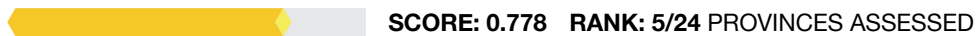
Economic Constraints



54.8 **5.9%** **36.5%**
Economic dependency ratio Unemployment rate Poverty rate



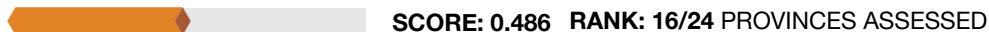
Gender Inequality



2.19 **45.3**
Female to male unemployment Female judiciary seats



Population Pressures



1.1%
Average Annual population change



COPING CAPACITY (CC)

RANK: 1 / 24 PROVINCES ASSESSED
SCORE: 0.564

Córdoba exhibits weaker Coping Capacity in the areas of Governance and Economic Capacity. The bar chart indicates the socioeconomic themes contributing to the province's overall Coping Capacity score.



Economic Capacity

SCORE: 0.588 **RANK: 2/24 PROVINCES ASSESSED**

2331 Exports per capita (USD)	9.5% Work insurance coverage	18.7 Tax distribution
---	--	---------------------------------



Governance

SCORE: 0.518 **RANK: 10/24 PROVINCES ASSESSED**

18.1 Crime prevalence	80.8% Voter participation
---------------------------------	-------------------------------------



Environmental Capacity

SCORE: 0,237 **RANK: 18/24 PROVINCES ASSESSED**

8.7% Protected area	17.5% Forest cover
-------------------------------	------------------------------



Infrastructure Capacity

SCORE: 0.693 **RANK: 2/24 PROVINCES ASSESSED**



Health Care Capacity

SCORE: 0.682 **RANK: 2/24 PROVINCES ASSESSED**

38.6 Hospital beds per 10,000 people	46.8 Physicians per 10,000 people	67.1% Health insurance coverage	17.9 Average distance to nearest hospital (km ²)
--	---	---	--



Transportation Capacity

SCORE: 0.661 **RANK: 7/24 PROVINCES ASSESSED**

0.29 Road density (km per sq. km)	20.4 Average distance to port (km)	100.0% Proportion of roads improved
---	--	---



Communications Capacity

SCORE: 0.726 **RANK: 3/24 PROVINCES ASSESSED**

39.8% Households with Internet	28.6% Television subscriptions per 100 people
--	---



Energy Capacity

SCORE: 0.704 **RANK: 10/24 PROVINCES ASSESSED**

98.4% Households with electricity	51.2% Households with gas
---	-------------------------------------



Disaster Management Capabilities

SCORE: 0.6 **RANK: 5/24 PROVINCES ASSESSED**

29.5 Distance to fire station (km)	0.2 Shelters per 100k persons	66.5% Radiobase access
--	---	----------------------------------



RESILIENCE (R)

RANK: 7 / 24 PROVINCES
SCORE: 0.509

Córdoba's score and ranking are due to Moderate Vulnerability combined with Very High Coping Capacity scores.

Below are the four thematic areas with the weakest relative scores:



Gender Inequality



Environmental Stress



Governance



Economic Capacity



HAZARD-SPECIFIC RISK (HSR)



Earthquake

RANK: 9 / 24 PROVINCES ASSESSED
SCORE: 0.052



Wildfire

RANK: 16 / 24 PROVINCES ASSESSED
SCORE: 0.213



Volcano

RANK: 9 / 24 PROVINCES ASSESSED
SCORE: 0.000



Flood

RANK: 10 / 24 PROVINCES ASSESSED
SCORE: 0.272



Landslide

RANK: 4 / 24 PROVINCES ASSESSED
SCORE: 0.288



Drought

RANK: 9 / 24 PROVINCES ASSESSED
SCORE: 0.464



Extreme Temperature

RANK: 2 / 24 PROVINCES ASSESSED
SCORE: 0.464



MULTI-HAZARD RISK (MHR)

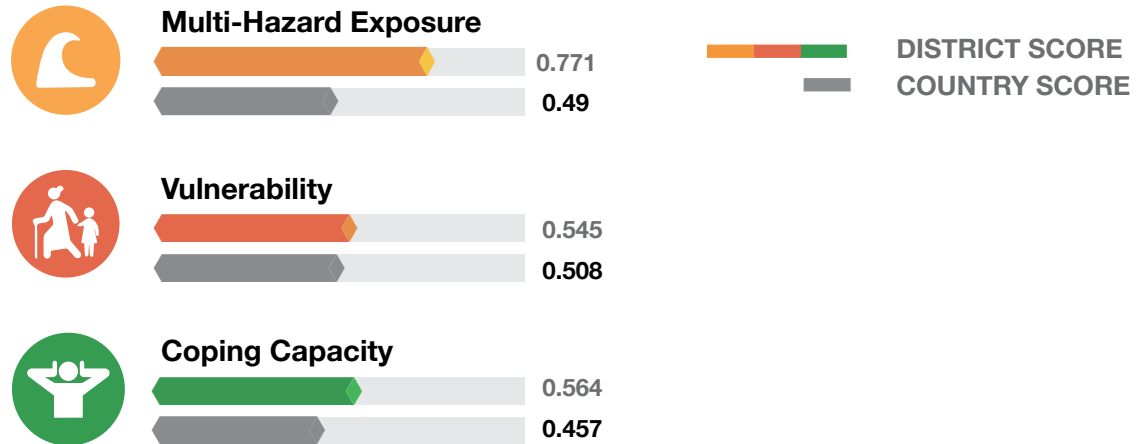
7 / 24

RANK WITHIN PROVINCES
Score: 0.584



Córdoba's score and ranking are due to Very High Multi-hazard exposure combined with Moderate Vulnerability and Very High Coping Capacity scores.

Multi-hazard risk component scores compared to overall average country scores:



CÓRDOBA RECOMMENDATIONS

1

Gender Inequality

Focus efforts to support equal labor participation by diversifying economic opportunities for women in the Province.

Promote social benefit programs that support single parents with children.

Encourage women to participate in the disaster management planning and decision-making process through inclusion community emergency brigades and representation in local government.

2

Environmental Stress

Focus on protecting environmental resources from degradation, and deforestation. These environmental stresses increase the likelihood of hazard events and have wider implications for negative impacts on health and livelihoods, decreasing resilience.

Focus mitigation efforts to prevent, respond to, and reduce the impact of wildfires.

CÓRDOBA RECOMMENDATIONS

3

Governance

Though Córdoba Province has the highest overall Coping Capacity, findings show that Córdoba's crime prevalence is 9th highest in Argentina. Focus on strengthening support for public security through increased law enforcement and surveillance, youth education and personal safety programs, and community support programs for ex-criminals.

4

Economic Capacity

Findings show that overall Economic Capacity is very high in Cordoba. However, tax distributions to the Province are 4th lowest in Argentina. Continue to assess equitable distributions of revenue across all Provinces and promote Province-level contingency funds to provide economic liquidity during disasters.

**Better solutions.
Fewer disasters.**

Safer world.

**1305 N Holopono Street
Suite 2, Kihei, HI 96753**

**P: (808) 891-0525
F: (808) 891-0526**



@PDC_Global



/PDCGlobal



www.pdc.prg



ndpba.arg@pdc.org