



Users with access to ESRI ArcGIS products may add/access APNHIN_PDC_Tsunami_Response data layers through the www.pdc.org Internet Server.

If using ESRI's ArcMap:

Step 1: Start ArcMap. Choose "Start using ArcMap with a new empty map" from the dialogue box that appears. Click "OK."

Step 2: Select "File | Add Data" (or click the yellow  icon on the tool bar).

Step 3: An "Add Data" dialogue box will appear. Select the "Internet Servers" option from the drop down menu. See Figure 1. (Note that this tool remembers its last state, so you may need to navigate up a few levels to see the Internet Servers option).

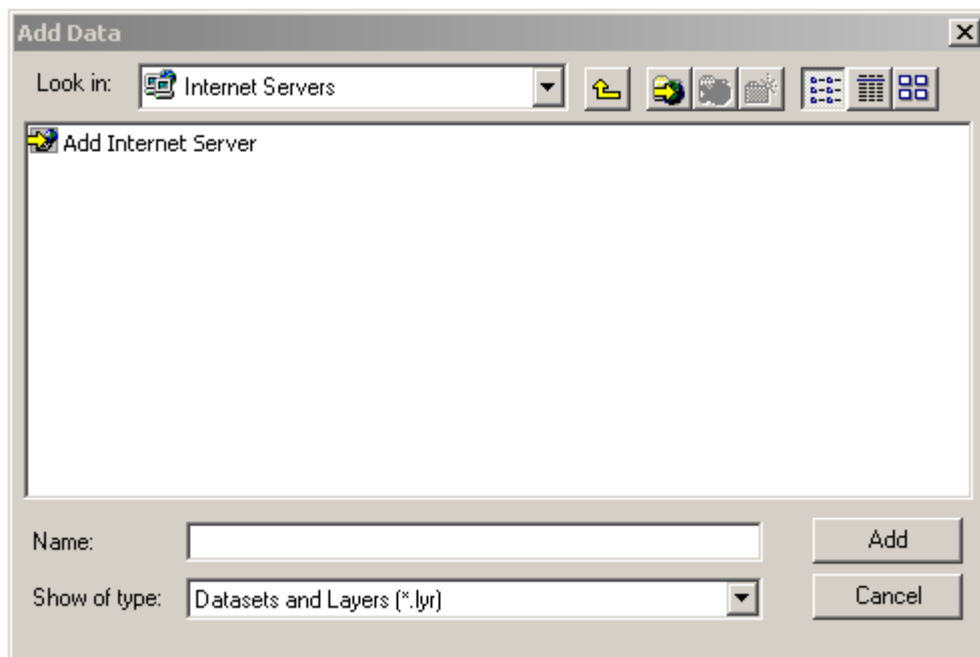


Figure 1

Step 4: Select the "Add Internet Server" option. Click "Add."

Step 5: In the "Add Internet Server" dialog, type the URL of server as: <http://www.pdc.org> and click "OK." See Figure 2. (Note that the "All Services" option will show you all presently published Map Services).

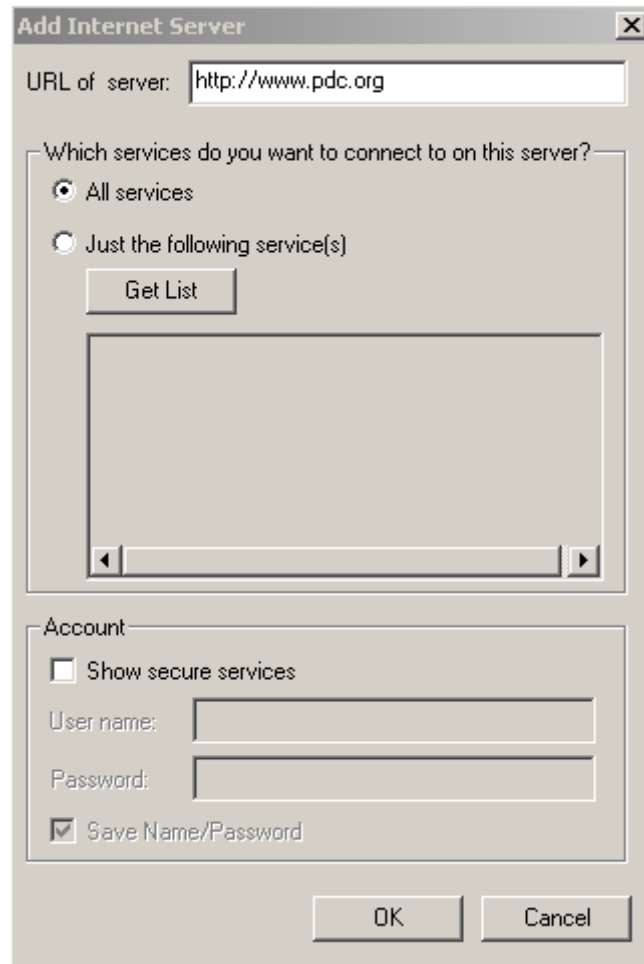


Figure 2

Step 6: You will see this "Internet Server" now listed in the "Add Data" dialogue window. Click on the www.pdc.org option, then click "Add." See Figure 3.

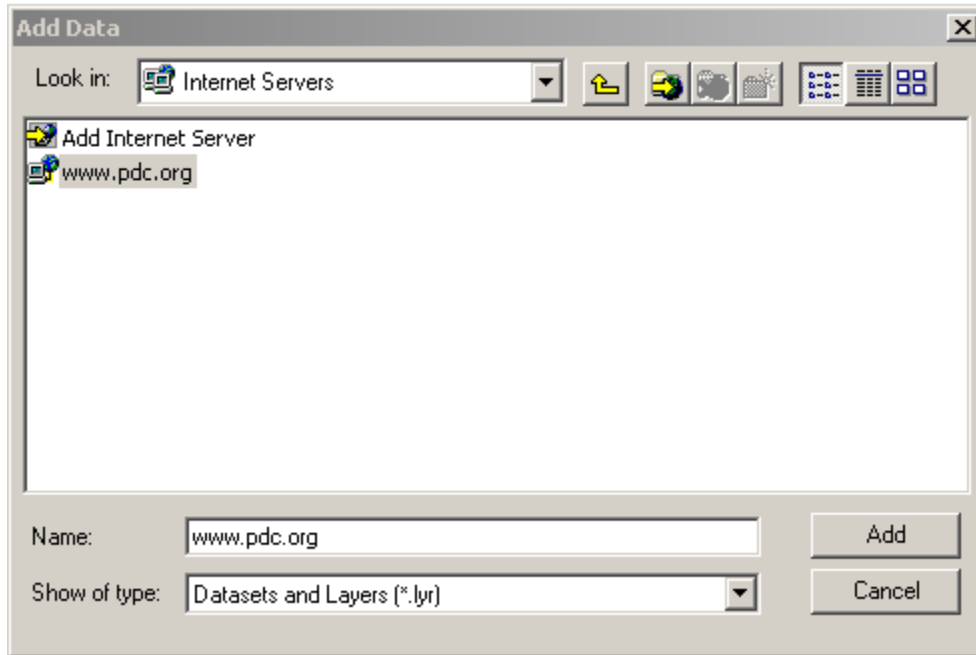


Figure 3

Step 7: A number of services will be listed, including the “APNHIN_PDC_Tsunami_Response” service. Select this service, then click “Add.” See Figure 4.

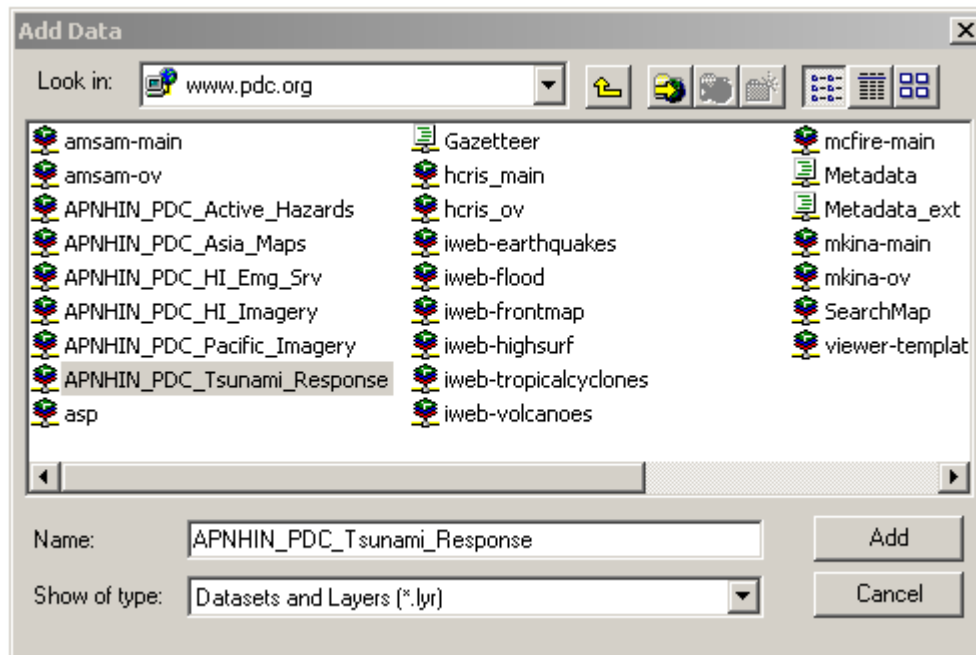


Figure 4

Step 8: This service will now be added as a series of data layers to the Table of Contents in ArcMap. See Figure 5. Data layers include the Earthquake Epicenter, Cities, Probable Damage

Areas, imagery, countries, etc. (Note that some data layers are best viewed when zoomed to a particular location, and may not be visible when viewing at the full extent.)

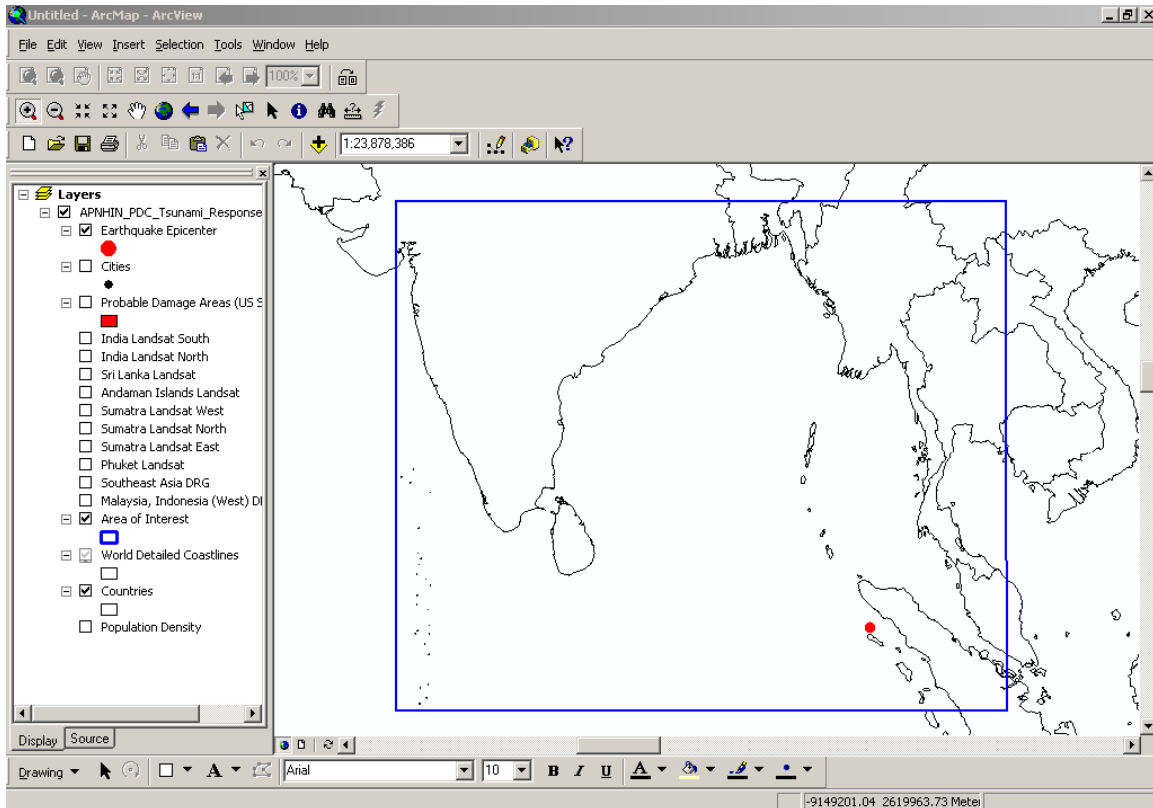


Figure 5