

95°10'0"E

95°15'0"E

95°20'0"E

95°25'0"E

5°25'0"N

5°25'0"N

5°20'0"N

5°20'0"N

5°15'0"N

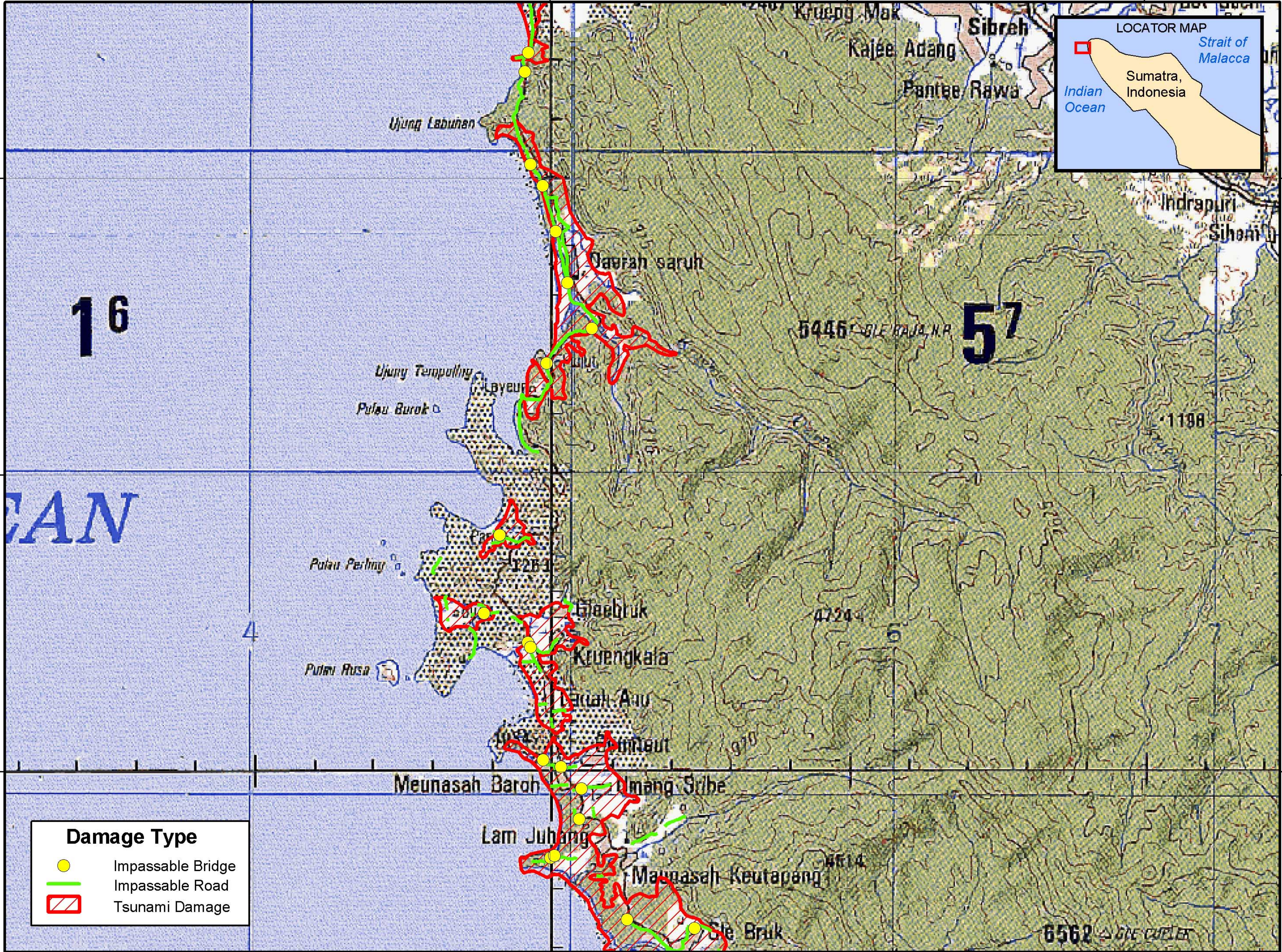
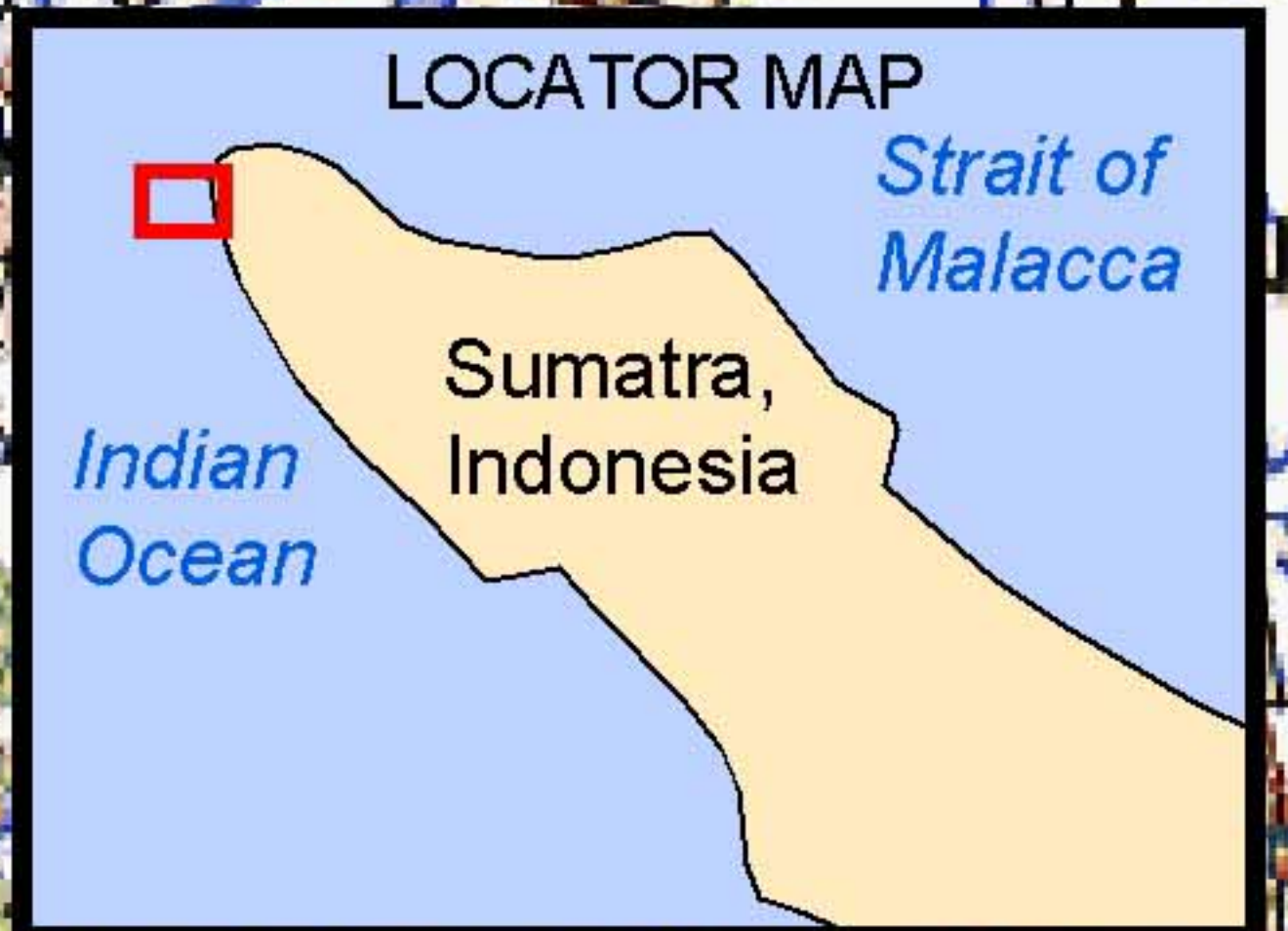
5°15'0"N

95°10'0"E

95°15'0"E

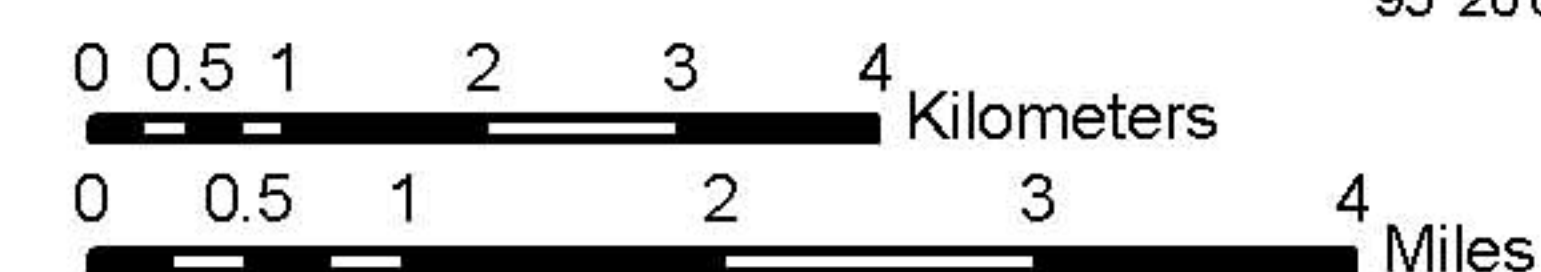
95°20'0"E

95°25'0"E



Damage Type

- Impassable Bridge
- Impassable Road
- Tsunami Damage



Sources: ESRI Vector Data
Projection: Geographic
Datum: WGS 84