

96°40'0"E

96°45'0"E

96°50'0"E

96°55'0"E

3°45'0"N

3°45'0"N

3°40'0"N

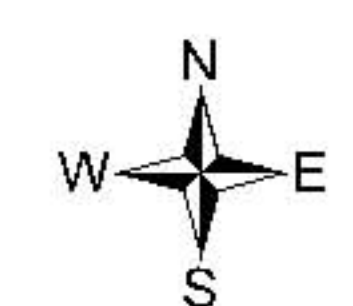
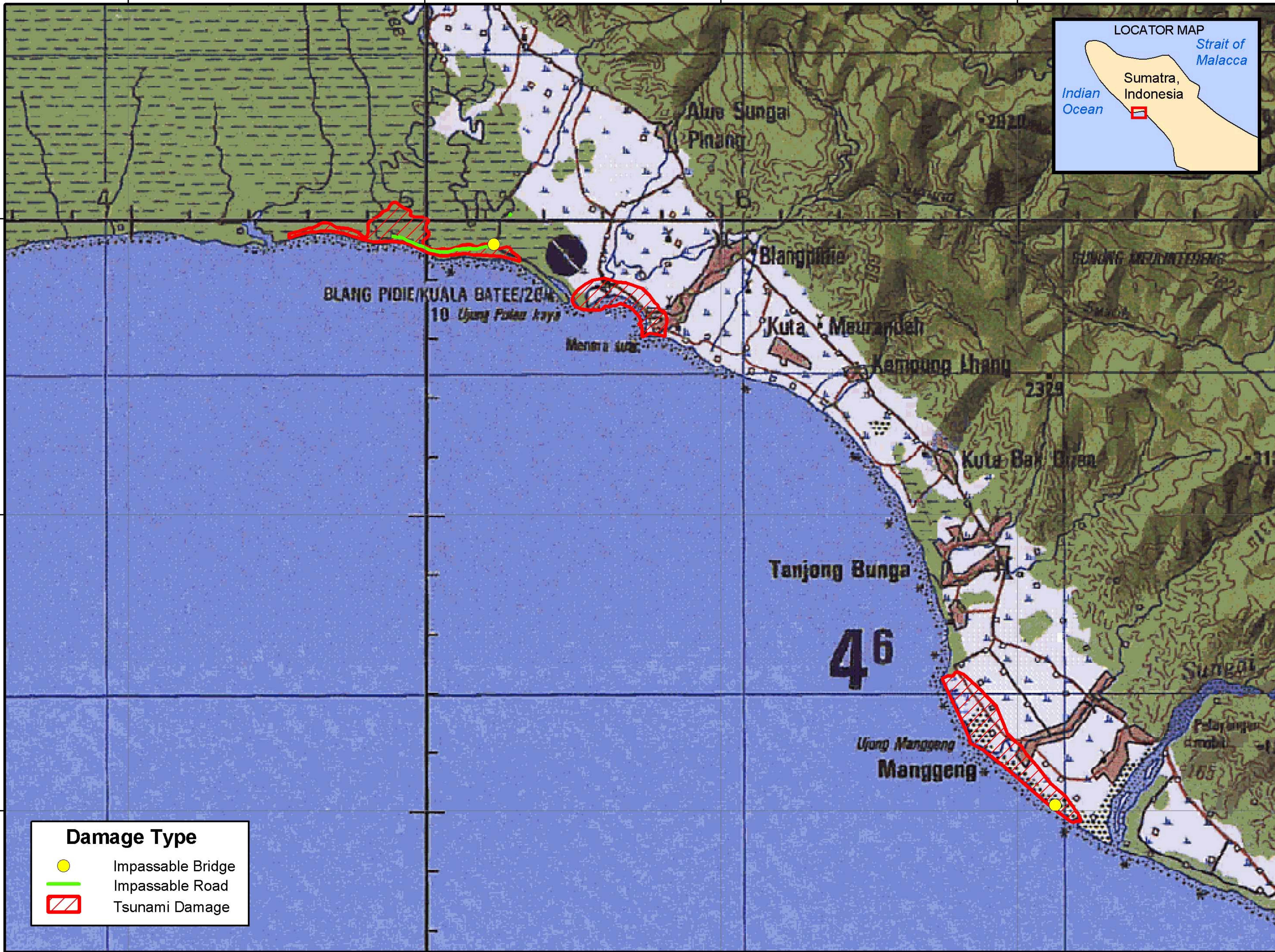
3°40'0"N

3°35'0"N

3°35'0"N

Damage Type

- Impassable Bridge
- Impassable Road
- Tsunami Damage

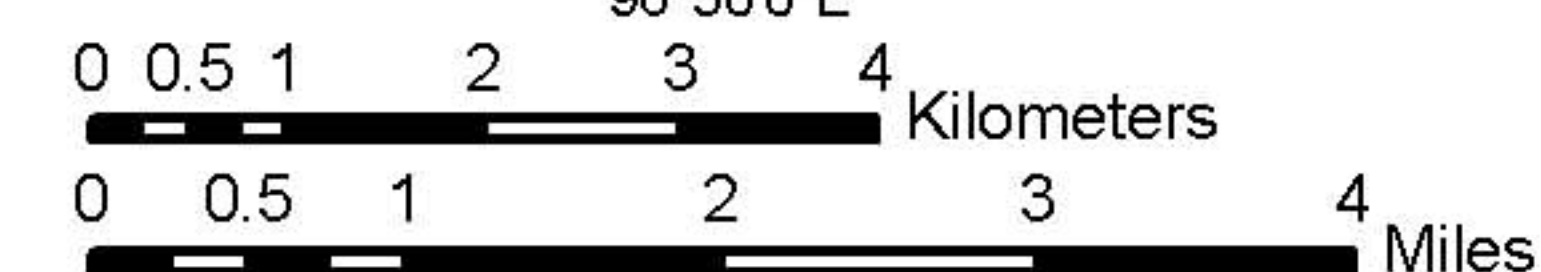


96°40'0"E

96°45'0"E

96°50'0"E

96°55'0"E



Sources: ESRI Vector Data
Projection: Geographic
Datum: WGS 84